

WELCOME

Welcome to the Rio Americano Band Program and its parent organization, Rio Americano Band Boosters (RABB). RABB is a non-profit organization dedicated to supporting the concert and jazz band programs at Rio Americano High School. With the support of the Band Boosters, the Rio Americano band program promises to continue to provide our students the opportunity for unparalleled musical growth and enrichment.

-Our Directors-



Josh Murray has been a tireless band teacher and musical mentor at Rio since 1998. Mr. Murray grew up in New York City where he studied saxophone under Daniel Wilensky and David Mann. He attended the New School for Jazz and Contemporary Music, learning from Reggie Workman, Jimmy Cobb, Ira Gitler, Kenny Werner, and Joanne Brackeen, among others. Mr. Murray's performing credits include shows with Phil Woods, Jimmy Smith, Peter Erskine, Bobby Shew, Gary Foster, the Jim Widner Big Band, and the Drifters. He has a Bachelor's Degree in History from UC Davis and a Masters in Education from Chapman University. During the 2010-11 school year, Mr. Murray will teach Instrumental Ensemble, Advanced Concert Band, Honors Concert Band, AM Jazz Band, and FM Jazz Band.

Max Kiesner, a native of Green Bay, Wisconsin, had his first exposure to the Rio program when his high school shared the same stage at the 2001 Essentially Ellington jazz competition in New York City. Mr. Kiesner went on to pursue his studies in Jazz and Music Education at Northern Illinois University, home of Professor Ronald Carter. At NIU, he had the opportunity to tour and perform with Bobby Shew, Byron Stripling, Claudio Roditi, Eddie Henderson, Allen Vizzutti, Donald Harrison, Rodney Whitaker, Red Halloway, Conrad Herwig, Russell Gunn, and Charles McPherson. This year at Rio, Mr. Kiesner is looking forward to teaching the PM Jazz Band, Jazz Workshop, Intermediate Concert Band, Honors Concert Band and Music Appreciation.



Rio Americano Band Room 971-7512

Josh Murray, (Cell) (916) 396-3453

email: jomurray@sanjuan.edu

Max Kiesner, (Cell) (916) 541-0982

email: maxwell.keisner@sanjuan.edu

Please respect that home phone and email information are for emergency use and not for general distribution. Thank you

Table of Contents

	<i>Page</i>
Calendar of Band Events, 2010-11	3-4
Rio Band Program	5-10
Concert Band	6
Intermediate Band	6
Advanced and Honors Concert Bands	7
Small Ensemble	8
Jazz Band Program	9-10
Helpful Information	11-12
Band Room	11
Lockers	11
Code of Conduct	11
Dress Code	11
Chaperones	11
Transportation to Performances	11
Medical Release Forms and Permission Slips	11
Photos Of Students/Opt Out Requests	12
Concert Band Proficiency Test	12
Grading	12
Attendance	12
Parent Support Expectations	13
Estimated Costs 2010–11	14
Playathon	16-17
Dinner Dance	18
From the Directors, Josh Murray and Max Kiesner: Philosophy and Curriculum	19
Glossary	20-22



Calendar of Rio Band Events 2010–11

<i>When</i>	<i>What</i>	<i>Who</i>	<i>Where</i>
<u>Aug 2010</u>			
24	First Day of School		
27	Rally	Pep Band	Rio
31	RABB Board meeting 6pm	RABB Board	Rio Band Room
	RABB General meeting 7:15 pm	All Band Parents	
<u>Sept 2010</u>			
4	Home Football Game	Pep Band	Rio
15	Back-to-School Night	Combo & All band Parents	Rio Band Room
18	Home Football Game	Pep band (?)	Rio
19	Monterey Jazz Festival	AM	Monterey, CA
29	Small Ensemble Night	Small Ensemble	Rio Band Room
<u>Oct 2010</u>			
16	Home Football Game	Pep Band	Rio
22	Rally	Pep Band	Rio
23	Home Football Game	Pep Band	Rio
<u>Nov 2010</u>			
3	Parent Information Night	AM Jazz	Rio
5	Playathon!	All Band students	Rio campus
6	Home Football Game	Pep Band	Rio
<u>Dec 2010</u>			
11	CSUS Jazz Festival	AM, PM, FM Combos	CSUS
15	Small Ensemble Night	Small Ensembles	Rio Band Room
17	Home Basketball vs. Jesuit	Pep Band	TBA
<u>Jan 2011</u>			
18	RABB Board Meeting 6pm	RABB Board	Rio Band Room
	RABB General Meeting 7:15pm	All Band Parents	
20	Winter Concert	All Concert Bands	Rio
27	Kiwanis Jazz Festival	All Jazz Bands	Rio
29	Folsom Jazz Festival	AM, PM, FM	Folsom H.S.
<u>Feb 2011</u>			
12	CSUS Traditional Jazz Festival	Trad. Jazz Groups	CSUS
16	Small Ensemble Night	Small Ensembles	Rio Band Room
18-20	Charles Mingus Festival	Group TBA (Pending Acceptance)	NYC

Mar 2011

1	Chamber Music Concert	HCB	Rio
5	Rio-Arden Dinner Dance	All Parents/Jazz Bands	Scottish Rite
18-19	Santa Cruz Jazz Festival	AM, PM, FM	Santa Cruz

Apr 2011

1-2	Monterey Next Generation Festival (Pending)	AM	Monterey
6	Open House – Jam Sessions	Open Jam	Rio campus
7	SJUSD Band Festival	HCB	TBA
8-9	Reno Jazz Festival	AM, PM, FM	Reno, NV
27	Small Ensemble Night	Small Ensemble	Rio Band Room

May 2011

12-14	Essentially Ellington Festival	AM (Pending Acceptance)	New York City
-------	--------------------------------	----------------------------	---------------

June 2011

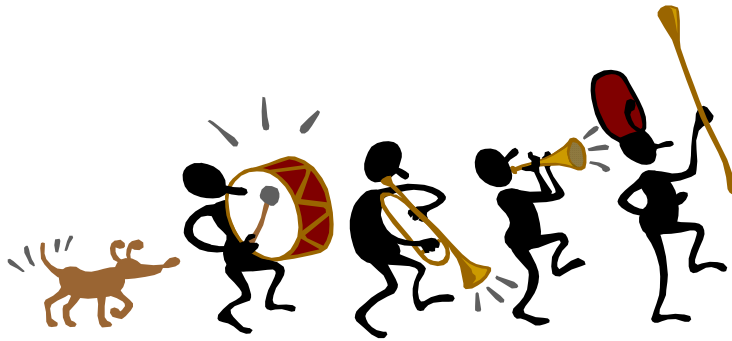
3	Rally	Pep Band	Rio
9	Graduation	Honors Concert Band & AM	Memorial Aud.
10	Last Day of School	All students	Rio

TBA = to be announced.

TBD = to be determined.

See Glossary for definition of acronyms and description of activities as well as honor band events.

RIO BAND PROGRAM



The Rio Band program consists of three basic programs: Concert Band, Jazz Band, and Instrumental Ensemble. These programs offer a wide range of music education and performance from beginning to advanced levels. This handbook is intended to answer questions about prerequisites, auditions, assessments, evaluations, procedures, and the basic inner workings of our curriculum, courses, and program. This will help both the students and parents understand what's available and what the expectations are at each level in the program. This handbook is also posted on the RABB website, www.Rioband.net. Please visit the website frequently for important updates.

CONCERT BAND PROGRAM

New Students to Concert Band

Virtually all new students to the Rio Band program will be enrolled in 3rd period band. During the first weeks of school, these students will audition for placement into either Advanced Concert Band or Intermediate Band. The audition may consist of:

- A few scales
- A prepared piece
- A short sight reading excerpt

Once placed, students may re-audition, though this is usually done at the semester. The following chart describes the basic curricula of the Intermediate and Concert Band classes.

Returning Students in Concert Band

All students returning to the program will have been auditioned the previous spring to determine their placement for the current year. They are assigned to the band that most appropriately fits their ability and need (i.e., Intermediate Band, Advanced Concert Band, or Honors Concert Band). During the first week of school, students will be chaired based on their performance in sight reading, an assigned excerpt, and scales. Once placed, students may re-audition, but this is usually done at the semester.

Intermediate Band

Grade 1-3 Literature

Scales in 2-3 keys

- | | |
|------------------|--------------|
| ▪ Chromatic | ▪ Dorian |
| ▪ Major | ▪ Phrygian |
| ▪ Natural Minor | ▪ Lydian |
| ▪ Harmonic Minor | ▪ Mixolydian |
| ▪ Melodic Minor | ▪ Aeolian |
| | ▪ Locrian |

Music Theory

- scales and key signatures
- major, minor, augmented, and diminished intervals
- relative and parallel modes
- instrument transposition

Ear Training

- diatonic melodic dictations in major & minor modes
- small skips
- simple rhythms
- chromatic intervals

Performances

Playathon, Winter and Spring Concerts

Appropriate attitude and behavior required

Advanced Concert Band

Grade 2-4 Literature

All 12 Major Scales

Same scales as Intermediate Band plus:

- Major seventh chord
- Dominant seventh chord
- Minor seventh chord
- Half diminished seventh chord
- Major pentatonic
- Minor pentatonic
- Whole tone

Music Theory

- scales and key signatures
- major, minor, augmented, and diminished intervals
- relative and parallel modes
- instrument transposition

Ear Training

- melodic dictation to the octave
- some accidentals
- medium skips
- harder rhythms
- chromatic intervals

Performances

- Playathon,
- Winter Concert
- Spring Concert
- Graduation (some years)

Appropriate attitude and behavior required

Honors Concert Band

Grade 4-6 Literature

Scales in all 12 keys

Same scales as Advanced Concert Band

HCB Requirements

- Piano proficiency
- Composition
- Community service

Music Theory

- scales and key signatures
- major, minor, augmented, and diminished intervals
- relative and parallel modes
- instrument transposition

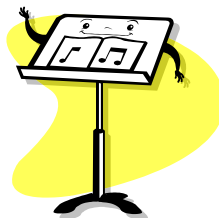
Ear Training

- melodic dictation beyond the octave
- more accidentals
- large skips
- complex rhythms
- chromatic intervals
- harmonies
- chord progressions and inversions

Performances

- Playathon
- Winter Concert
- Chamber ensembles
- Spring Concert
- SJUSD District Festival
- Graduation

Appropriate attitude and behavior required



SMALL ENSEMBLE

What is Instrumental or Small Ensemble?

This course is for the student who is interested in working independently or in a small group on selected music projects. Students may build a combo or small ensemble of any style or instrumentation. They may work on composition or arranging. They may work in the MIDI lab. They may woodshed on a special presentation. They may develop a second or third instrument. The possibilities are limited only by one's musical imagination.

Who's eligible?

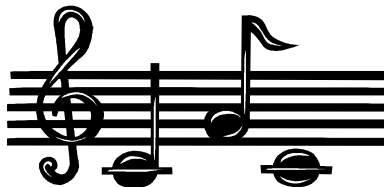
Sophomores, Juniors and Seniors who are taking a Concert band class or have already completed Honors Concert Band, with approval of the instructor. This class tends to cater to the more experienced musician but there is no limit. One simply creates a contract/course of study to be approved by the staff. **Small Ensemble is designed only to be a second band class for students.**

What resources are available?

Our music staff is on call, our MIDI workstations are ready, and an array of specially-instrumented music will be ordered depending on your need.

Will we perform?

Yes, the work of the students in this class will be showcased at many performances during the year.





JAZZ BAND PROGRAM

New Students to Jazz Band

Virtually all new students to the Jazz program will be enrolled in 2nd period Jazz, which is the FM Jazz Ensemble and Jazz Workshop. Concert Band is a prerequisite for jazz band and must be taken concurrently with Jazz because of the student/teacher ratio, the significance and comprehensive nature of the concert band curriculum, and the importance of being an involved and dedicated member of the program.

Jazz Workshop

- Soloing/improvising
- Grade 1-2 Jazz literature
- Critical listening
- 2-4 performances per year, including Playathon and dinner dance
- Emphasis on improvisation and jazz phrasing
- Jazz History
- Jazz theory
- Exposure to many jazz styles
- Ensemble playing
- No travel required
- Appropriate attitude and behavior required
-

FM Jazz Ensemble

- Soloing/improvising
- Grade 1-3 Jazz literature
- Critical listening
- 3-6 performances per year, including festivals
- Emphasis on improvisation and jazz phrasing
- Jazz theory
- Exposure to many jazz styles
- Ensemble playing
- Some travel
- Appropriate attitude and behavior required

Returning Students to Jazz Bands

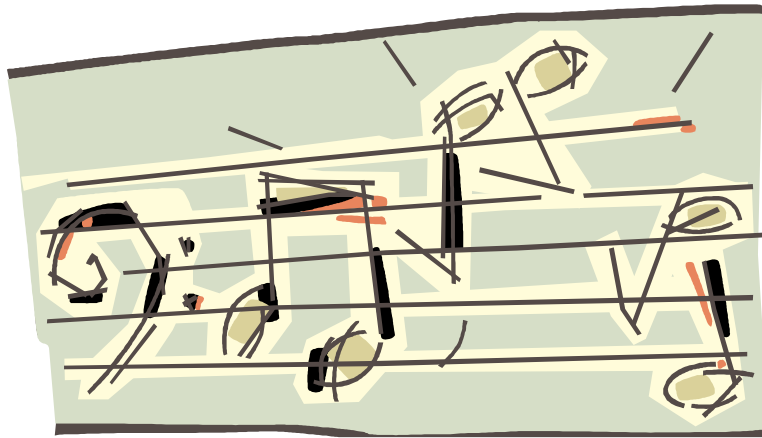
All students returning to the jazz program will audition in the spring to determine their placement for the fall, and students will be placed in either zero or 2nd period jazz. Some shifting, however, will likely occur in the fall because of specific band needs and changing student abilities. The audition may include any or all of the following: an assigned excerpt, a “call and response” exercise, sight reading, improvisation over a blues key, rhythm changes, or a standard tune like "All of Me" or "Satin Doll." Drummers are required to play swing, bebop, bossa, and samba. Those students placed in zero period jazz will be required to audition during the first week of school and then be placed into either the AM or PM Jazz Ensemble. Re-auditions may occur, especially at the semester and at the discretion of the directors.

PM Jazz Ensemble

- Soloing/improvising
- Jazz theory
- Phrasing and instrumental techniques
- Grade 3-5 Jazz literature
- Exposure to many jazz styles
- Critical listening
- Ensemble playing
- 5-7 performances per year (4 jazz festivals)
- Some travel (Santa Cruz, Folsom)
- Emphasis on improvisation and jazz phrasing
- Appropriate attitude and behavior required

AM Jazz Ensemble

- Soloing/improvising
- Jazz theory
- Phrasing and instrumental techniques
- Grade 4-6 Jazz literature
- Exposure to many jazz styles
- Critical listening
- Ensemble playing
- Travel (Folsom, Monterey, NYC)
- Possible outside gigs, clinics, music conferences
- Emphasis on improvisation and jazz phrasing
- Appropriate attitude and behavior required





Helpful Information



Band Room

The Band Room (M-1/M-2) is usually open from 6:35 AM to 4:00 PM and is accessible for your needs. There is an “open door” policy regarding office hours, so “drop-ins” are frequent and welcome. Students are expected to be responsible and to care for the Band Room as well as its contents.

Lockers

Most students will be issued an instrument locker in the Band Room (M-1/M-2). These students will be responsible for supplying their own padlocks.

Code of Conduct

Band events are designed to provide an enjoyable experience for everyone. As representatives of Rio Americano High School, music students are expected to impart a favorable impression of the Rio student body. In order to maintain harmony, it is necessary to establish expectations that apply to the entire group. The band program adheres to the San Juan Unified School District’s *Discipline Code and Behavior Guidelines*. Persistent defiance of the code during off-campus activities will result in a student being sent home at the parent’s expense. Continued behavioral issues may result in dismissal from the program.

Dress Code

To ensure that the band has a professional appearance, please observe the dress code classifications for symphonic performances and jazz performances, as follows:

- | | |
|-------------------|---|
| “Black and White” | Black bottoms (slacks or skirts), white tops, ties for the guys, black dress shoes. Vests, sweaters, and/or jackets are optional. |
| “Nice” | Slacks, shirt with collar and tie for guys; dresses, skirts or slacks with blouses. Dress shoes. |

Inappropriate performance attire: Hats of any kind, T-shirts, tennis shoes, jeans, shorts.

Chaperones

Chaperones are utilized for a variety of band activities on and off campus, including the Playathon and the Dinner Dance. The chaperones’ duties generally include helping the directors and the students as needed.

Transportation to Performances

Transportation is provided to Middle School Visitations and Graduation. Students are responsible for transportation to all other events. Refer to Permission Slips section.

Medical Release Forms and Permission Slips

Parents are asked to sign permission slips and medical emergency release forms for all students participating in school band activities as events require. These signed forms accompany the band on all trips. In case a medical problem arises, the student’s parents/guardians will be notified as soon as possible. The release forms make it possible for the students to be admitted into the nearest medical facility for proper and immediate care if necessary.

Photos of Students/Opt Out Requests

Photos of students add to the value of school publications and web sites. It is our desire to share the achievements and recognitions earned by our students with the community. This can be aided by the use of photos showing students involved in school related activities.

Unless notified in writing of an objection by a parent, legal guardian, or student of age 18, photographs of students and/or names may be posted in school and RABB produced materials. Photo/Video Opt-Out forms are available in the band office or on the RABB website. Please be aware that opt-out requests are valid for the current school year and must be renewed at the start of the next school year.

Concert Band Proficiency Test

This test is designed to test the proficiency of students in the following areas:

1. **Sight Reading.** Each student will be asked to read an excerpt from a piece appropriate to his or her level.
2. **Scales.** Each student will be asked to play various scale forms and modes.
3. **Music Theory and Ear Training.** Each student will be asked to demonstrate proficiency in the following areas:
 - Key signatures and scales
 - Intervals and transpositions
 - Melodic and rhythmic dictation
4. **Musical Excerpt.** Each student will be asked to play an assigned excerpt of the appropriate grade level.
5. **Attitude and Behavior.** Students need to have a positive attitude toward music and the rehearsal process. Disruption or working against our musical learning will not be tolerated.

Grading

Hard work and a positive attitude are necessary for musical and academic success in Band. Due to the unique and collaborative nature of band classes, our grading system is a bit different than many other classes. Your academic grade is compiled from two equal parts:

1. **Quantitative measures**, such as scale tests, theory and ear-training, part-playing, etc.
2. **Qualitative measures**, such as attitude, cooperation, punctuality, attendance, and teamwork. In other words, do the things that are expected of all students, and you already have an 'A' for half of your grade!

Attendance

Students are expected to be on time every day and to have all absences excused, by a parent or guardian, through the main office. Poor attendance will affect your academic grade in the following ways:

1. Grade drops ONE FULL LETTER for each unexcused absence ('cut') or three tardies per grading period.
2. You will receive a FAILING grade for missing a concert without prior notification of (and consent of) the instructor. If you run into a problem on the day of a concert, you are expected to contact the instructor by phone at home or in the band room.

PARENT SUPPORT EXPECTATIONS

All Parents

- ⊕ RABB membership (optional but strongly encouraged) and attendance at two meetings per year (fall & spring)
- ⊕ Transportation to:
 - At least 3 Concerts: Playathon, Winter Concert, Spring Concert
- ⊕ Support of two fundraisers:
 - Playathon (parents and students)
 - Dinner Dance (parents only)
- ⊕ Attend Winter and Spring Concerts and Year-end Awards

Jazz Band Parents

- ⊕ Transportation to Festivals:
 - CSUS Festival
 - Folsom Jazz Festival
 - Kiwanis Festival
 - Monterey (AM only, if accepted)
 - Santa Cruz or Reno
 - Essentially Ellington (AM only, if accepted)
- ⊕ Transportation of students to perform at Dinner Dance

Optional Participation (at student/parent choice)

- ⊕ Honor Concert Bands:
 - All Northern
 - Capitol Section
 - CBDA All-State
 - CMEA All-Festival Band
- ⊕ Honor Jazz Bands
 - Monterey All Stars
 - CMEA All State Jazz
 - All Northern Jazz Band
- ⊕ Golden Empire Solo and Ensemble Festival



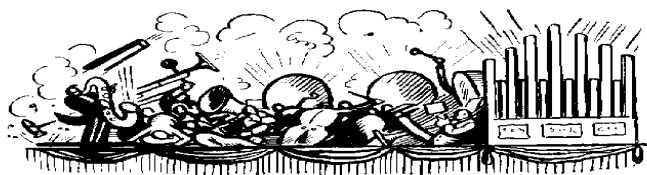
ESTIMATED BAND PROGRAM COSTS, 20010–11

Month	Activity	All students	AM Jazz	PM Jazz	FM Jazz
August	Percussion fee and Percussionist equipment (see glossary) (requested) Rhythm Section fee (requested)	Percussionists: \$60+ depending on equipment choices \$30			
September	RABB Membership (optional)	\$20 per family			
	T/Polo/Sweatshirts (optional)	\$11/\$21/\$23			
November	Playathon, misc. expenses and food for pledge parties and the Playathon itself	~\$20			
January	Folsom Jazz Festival Entry fee for parents or other non- participants Photos (optional)		~\$10 ea ~\$15 ea	~\$10 ea ~\$15 ea	~\$10 ea ~\$15 ea
March	Dinner/Dance Optional raffle items to purchase Santa Cruz Jazz Festival Double Room/meals (for 2 nights, but optional if you choose to drive up for the day) Photos (optional)	~\$30 -\$40 per person to attend; raffle tickets \$5 or more	~\$300 \$14 ea	~\$300 \$14 ea	~\$300 \$14 ea
April	Monterey Jazz Festival Room/meals (2 nights)		~\$400		

Should these estimated expenses cause a hardship, please see Mr. Murray, Mr. Kiesner and/or the RABB President. Arrangements can be made for scholarships, as no student's music education should be hindered by personal finances.



Playathon



WHAT'S THE PLAYATHON?

The Playathon is a major fundraiser for the Rio band program and a tradition that began in 1982. The money we raise buys music, instruments, supplies, provides travel opportunities, and generally allows the Rio Band to continue as a first-rate program. This event has grown to be a lot of fun for our students as well as a connection to the community, and a bond with our middle and elementary feeder schools. Basically, it's a blast. So, today the tradition continues.

HISTORY

The first Playathon was in 1981. It was an event to raise funds so the students could go on a Spring Trip, and usually entailed a marching performance somewhere - maybe to another school or Disneyland. The money raised was set aside exclusively for this purpose. There were no minimums, but the Band traveled only as far as the money raised would take them. The original 24 hour event consisted almost entirely of sight reading. The students divided into six groups and four played while two rested.

Since that time, the Playathon has evolved into a major tradition and bonding experience for Rio band students. The 24-hours of non-stop music continued until 2002, and now the event has been shortened to 17 hours of non-stop music, eliminating only the overnight aspect. The format and features of the Playathon may change year to year, but the fun remains.

HOW IT WORKS

The Playathon is comprised of two main parts: **Pledge Parties** and the **Playathon**. **Pledge Parties** are voluntary, organized fundraising activities for students to promote the Band Program, publicize the Playathon and canvas local neighborhoods for donations and/or pledges. All students are strongly encouraged to participate to help raise funds for the general program.

For the Pledge Parties, students meet at the home of a host family. After canvassing the neighborhood, they return to the host family's home to share a meal together. The host family collects \$5 per student to cover the cost of the meal. These get-togethers offer an excellent opportunity for the students to work together to reach the Band's financial goals and to get to know each other. New students are grouped with those who have participated in past years. Donations received during the Pledge Parties are credited equally among all participants.

Several Pledge Party dates offer flexibility to students, so that most students will be able to fit a date into their schedules.

The **Playathon** event is the musical marathon in which all band students participate. There is a schedule designating when each group will play. The Playathon is open to the entire school body and the community. Feeder elementary and middle school band students are invited to play along with the Rio bands in the afternoon between 3:00 and 5:00 p.m. Parents are encouraged to attend the evening concert, and the late night dance is always popular with students. Food is provided for band students, and parent chaperones supervise the students throughout the entire Playathon. Also, a security guard is on campus in the evening. Specific themes and activities are developed year-to-year so that every year's event is unique.

This year the **Playathon will begin at 7 AM on November 5th and continue until 12:00 AM on November 6th. It will take place in two main venues; the Little Theatre and the Cafeteria.**

VOLUNTEERS

The success of this fundraiser is dependent upon the combined efforts of the Directors, the students, and the parents. **Students and parents are needed to chair the committees** which make the Playathon happen. These committee chairs need the help of all band members and parents. Committee chair positions include decorations, pledge nights, chaperones, cleanup, badges, finance/check-in, snacks, publicity, lunch, dinner, night dessert table, midnight pizza, and Playathon program. Publicity with the media is coordinated with RABB board publicity chair(s). The goal for parent chairs/volunteers is to assist, advise, and support the efforts of the student chairs/volunteers. Volunteer families also are needed as host families for pledge parties.

FREQUENTLY ASKED QUESTIONS

1. *The 24 hours of non-stop music sounds a little grueling but a lot of fun (if you're young). Why did you change it?* Answer – After 1 AM., the quality of the music and enthusiasm of the students and parent chaperones rapidly deteriorated. In addition, there were security concerns in the late night, not to mention extremely tired students. So the Playathon is now 17 hours, which is still grueling and a lot of fun. We have maintained all the best parts of the Playathon tradition and eliminated only the overnight aspect.

2. *How is the accounting done?* Students collect donations and turn them in at check-in. The money raised at Pledge Parties is shared by all students attending the pledge nights (after all the money is collected). Students collecting the highest amounts are recognized at the Playathon, and prizes are available.

3. *I have to leave for part of the Playathon. Is that okay?* Answer - Attendance is mandatory because this is considered a performance. In addition, going through this whole thing together is an important bonding experience for the students. But if you have to be away for awhile, please notify the directors in advance and bring a note from home stating the reason for and times of absence so we know where everyone is at all times.

4. *I'm bringing my relatives over to the Playathon. When is the best time?*

Answer: The main showcase concert is in the evening around 5 to 9 PM, but there are non-stop musical performances for the duration of the Playathon.

WHO TO CALL

To offer services or time or to pose questions, concerns, or ideas, contact the Playathon chairpersons (see names and phone numbers listed in this Handbook under RABB Board and Steering Committee Chairs).



Dinner Dance



What a splendid evening it is when we all have the opportunity to **DINE** and **DANCE** to some of the **best sounds in Sacramento**. This marvelous event is the **Rio/Arden Dinner Dance**.

It all started as a Spaghetti Pot Luck with paper utensils and paper napkins, held in the multi-purpose room at Arden Middle School with Mr. Wayne Reimers as the Arden Band Director. Parents organized this event and, for a few years, Arden was where the action was. After several years, the multi-purpose room was outgrown and the event had to be moved to a social hall at a church in the community. Finally, in February of 1995 the Dinner Dance had grown so large that the Scottish Rite Temple hall became the location of choice. This change in location prompted the use of china, silver utensils, cloth napkins, and linen tablecloths.

Today, Arden's Jazz Band, Rio's Jazz Ensembles, and Combo groups from both schools play their hearts out for the enjoyment of all in attendance. Through the generous donations of local music stores and the community at large, we are able to obtain quality items for a raffle and a silent auction. ***ALL PROCEEDS RAISED FROM THIS EVENT BENEFIT ALL BAND PROGRAMS AT BOTH SCHOOLS.*** Although only the jazz band students perform, **all band** students benefit, and all parents—concert, jazz, and non-band—have a marvelous time.

This event is all made possible by the involvement of the parents, the support of the band directors, and the outstanding musical ability of the band members. Many committees are formed to plan and organize this grand affair: Raffle, Decorations, Publicity, Adult Food, Student Food, Adult Beverage, Chaperones, and Clean-up. Anyone who has attended the Dinner Dance in the past can tell you what a magnificent event this has become. All band families are encouraged to participate, and the community at large is invited to attend.

Your participation in the planning of the Dinner Dance will be appreciated and will enrich your experience with this event. Please contact the parent chairs if you would like additional information or are interested in helping with one of the committees.

From the Directors, Josh Murray and Max Kiesner

PHILOSOPHY AND CURRICULUM

The Rio Americano Band Program has a long history of fantastic music, pride, and top-notch education. We fully intend on furthering that tradition this year. We are very excited about the challenges and adventures that await all of us.

First and foremost, the goal that we all have here is to teach our students the love of music and to give them the skills they need to enjoy it for a lifetime. This is done in a positive and creative atmosphere that promotes self discipline, independent thought, teamwork, and self esteem. Virtually every instrumental music program begins with Concert Band - a large ensemble. From there, if the number of students supports it, the school administration can offer other smaller classes, other levels, or other kinds of bands. In our case, we've been fortunate to add 4 Jazz Bands, other levels of Concert Band, and Small Ensemble class.

It is important to remember that all the decisions we make regarding policies are done for the good of the students and the overall good of the program. Implementation is done only after careful scrutiny and virtual assurance that the change is for the better. Feel free to contact us with any questions at either jomurray@sanjuan.edu or maxwell.kiesner@sanjuan.edu.





Glossary

Assistant Director

This student(s) is elected by the band members to represent them, occasionally conduct them, and assist the band directors with a variety of activities and responsibilities. It is an important leadership role and liaison for all band news, decisions, and communications.

CBDA

California Band Directors Association. This organization hosts the All-State Honor Band.

CMEA

California Music Educators Association. This organization hosts the State Music Convention and serves as an umbrella for all CMEA regions like the Bay Section, Capitol Section, etc.

CODA

California Orchestra Directors Association. This group hosts the All-State Honor Orchestra.

Capitol Section

Our region of CMEA. Also called Golden Empire. This group hosts regional music festivals for bands, orchestras, choirs, and solo and small ensembles.

Combos


Combos are student run and hired out when clients call us for small groups to play music for an event. 25% of the money goes to our music program and the rest is divided among the players. To become a certified combo eligible for gigs, the students need to develop appropriate repertoire and demonstrate professionalism in handling organizational details regarding the client and the gig.

Golden Empire

Nickname for our section/region of CMEA. See above under “Capitol Section.”

Honor Bands

Generally, there are two levels of honor band; Regional and State for both the Concert and the Jazz student. Students are also eligible for Honor Orchestras. The following table serves as illustration.

	REGIONAL	STATE
Concert	All Northern, Capitol Section	CBDA All-State CMEA All-Festival Band
Orchestra	None	CODA, CMEA All-State
Jazz	All Northern	CMEA All-State, Monterey

There are extensive applications fees, recording, and travel for some of these. RABB will pay the application fees but each student is responsible to compile all information and turn it in on time. If you're interested in the CODA Honor Orchestra, the deadline is early. Most applications and audition requirements are on the web and most music stores have the musical excerpts. Read the applications carefully and follow directions. Some audition committees are very picky. Honor band websites: Calmusiced.com, ncbaonline.org, cmea-cs.org, CBDA.org.

Jazz Band Names

We started with one jazz band. When the district allowed us to have two bands, they needed their own names. One was in the morning and one was in the afternoon so it became AM and PM. We added a third, and after considering the possibilities, decided on FM. Our fourth jazz band is called Jazz Workshop

Jazz Band Prerequisite

Concert Band must be taken concurrently with Jazz because of the student/teacher ratio, the significance and comprehensive nature of the concert band curriculum, and the importance of being an involved and dedicated member of the program.

MENC

Music Educators National Conference. Like CMEA, but national.

Middle School Tour

Used to be called "Beat the Bushes" when we were trying to drum up business and recruit new students. This is when we take a few groups or students to the feeder middle schools and urge them to take music classes in high school.

Pep Band

Pep band is a volunteer group, generally with our most experienced players. We will play at home football and basketball games and at rallies. The Pep Band is a great experience and it provides spirited sounds at the games.

Percussion/ Rhythm Section/ Small Ensemble fee

This fee is requested to help maintain the instruments and equipment used by percussionists, rhythm section members and Small Ensemble. The fee is listed in the Estimated Cost section of this Handbook.

Percussionist Equipment

Just as wind players have equipment and accessories associated with their instruments, percussionists are required to have their own tools for performance in band. Each percussionist should have his/her own sticks, brushes (for jazz), all-purpose mallets, and timpani mallets. These items are available at most music stores.

RABB

The Rio Americano Band Boosters is our support organization of parents, students, alumni, community, and other music enthusiasts. The goals of RABB are to aid the bands with their activities, to provide encouragement and assistance to the Rio Americano music department, and to promote fund-raising events that benefit all of the bands. RABB is a non-profit organization and by-laws are available from the RABB Secretary. Your donations are tax deductible and help provide our students a top quality music education.

Website

On-line Rio Band information: EVERYTHING you want or need to know, including the RABB Handbook, RABB bylaws... PLUS *recordings, photos and fun, interesting stuff!* Check it out: rioband.net



🎵 **RABB BOARD & STEERING COMMITTEE CHAIRS 20010-11** 🎵

Board of Directors

Position	Volunteer	Phone Number	E-mail
President	Susan Tracy	482-7014	sstfam@winfirst.com
1 st Vice President	Valerie Pearlman	419-6905 717-1215	vpearlman@surewest.net
2 nd Vice President	Patty DuBois	481-7720	john98@surewest.net
Secretary	Debra Simons	765-1890	debrajsimons@gmail.com
Treasurer	Liz Fong	483-5102	dletc5@att.net
Band Director	Josh Murray	971-7512	jomurray@sanjuan.edu
Band Director	Max Kiesner	971-7512	maxwell.kiesner@sanjuan.edu

Steering Committees

Position	Volunteer	Phone Number	E-mail
Athletic Boosters Liaison	Clay Elledge	483-1832	klaydo@aol.com
Auditor	Astrid Kinn	486-9233	ajtai@winfirst.com
Concert Programs	Debra Simons	765-1890	debrajsimons@gmail.com
Dinner Dance (Rio)	Kelley Shelton	485-6436	sheltonmk@aol.com
Dinner Dance (Arden)	Debbie McCoy Danielle Walters		moreheadmccoy@sbcglobal.net couverma@surewest.net
Directory/Database	Diane Lewis Scott	487-7677	dscott1218@gmail.com
Handbook	Mary Smith	468-9680	jazzmama4@yahoo.com
Historian(Senior)	Matt Shelton	485-6436	sheltonmk@aol.com
Historian(Junior)	Harvey Edber	973-1363	h.edber8@gmail.com
Historian (Sophomore)	Bruce Reeves	359-8953	bruce.reeves1@me.com
Historian (Freshman)	Pat McCuen	489-7836	pmccuen@capitolavenue.com
Jazz Band Liaison	Peter Keyser-Petty Theresa Keyser-Petty	541-3095	cottonmonster@sbcglobal.net
Playathon	Mark Mills	802-9342	brohammills@yahoo.com
Promotions	Abby Wright	715-6684	abby@surewest.net
PTSA Liaisons	Sheryl Gutmann Debra Simons	487-6266 765-1890	gutmann@winfirst.com debrajsimons@gmail.com
Publicity & Special Events	Abby Wright	715-6684	abby@surewest.net
Spring Concert& Finale	Pat Sieberg	488-8754	apkw_004@comcast.net
Webmaster	Larry Straka	971-4746	mtstraka@aol.com
Fundraising	OPEN		

Nominating Committee elected in September. See 1st Vice President for job descriptions.